



CEIBAL Plan Technical Area

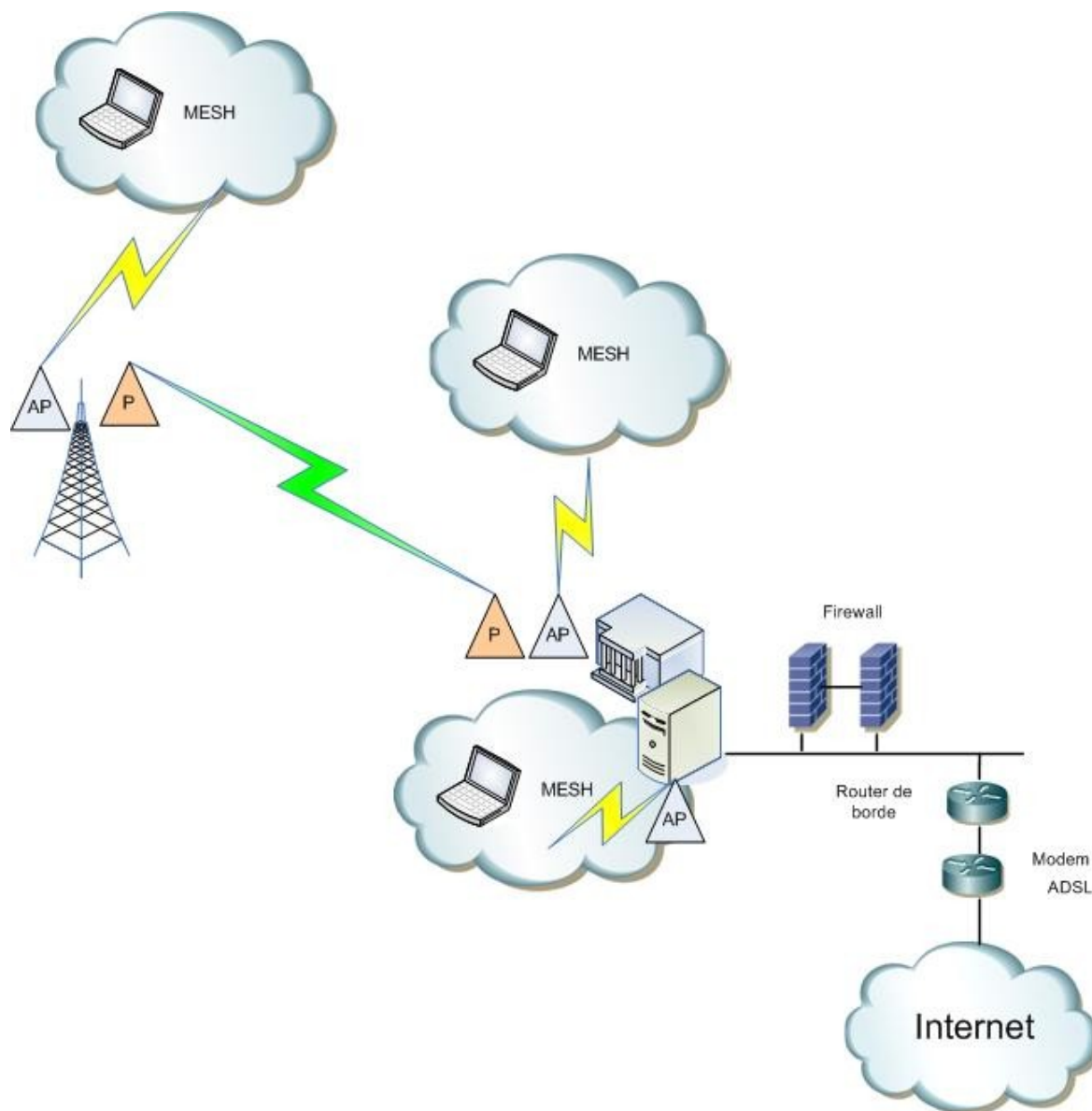
Fiorella Haim



Structure

- LATU is in charge of technical implementation
- 23 young engineers and advanced students (telecom and computer)
- 4 Departments: Projects, Connectivity, Systems and (network) Support

Generic Network Diagram

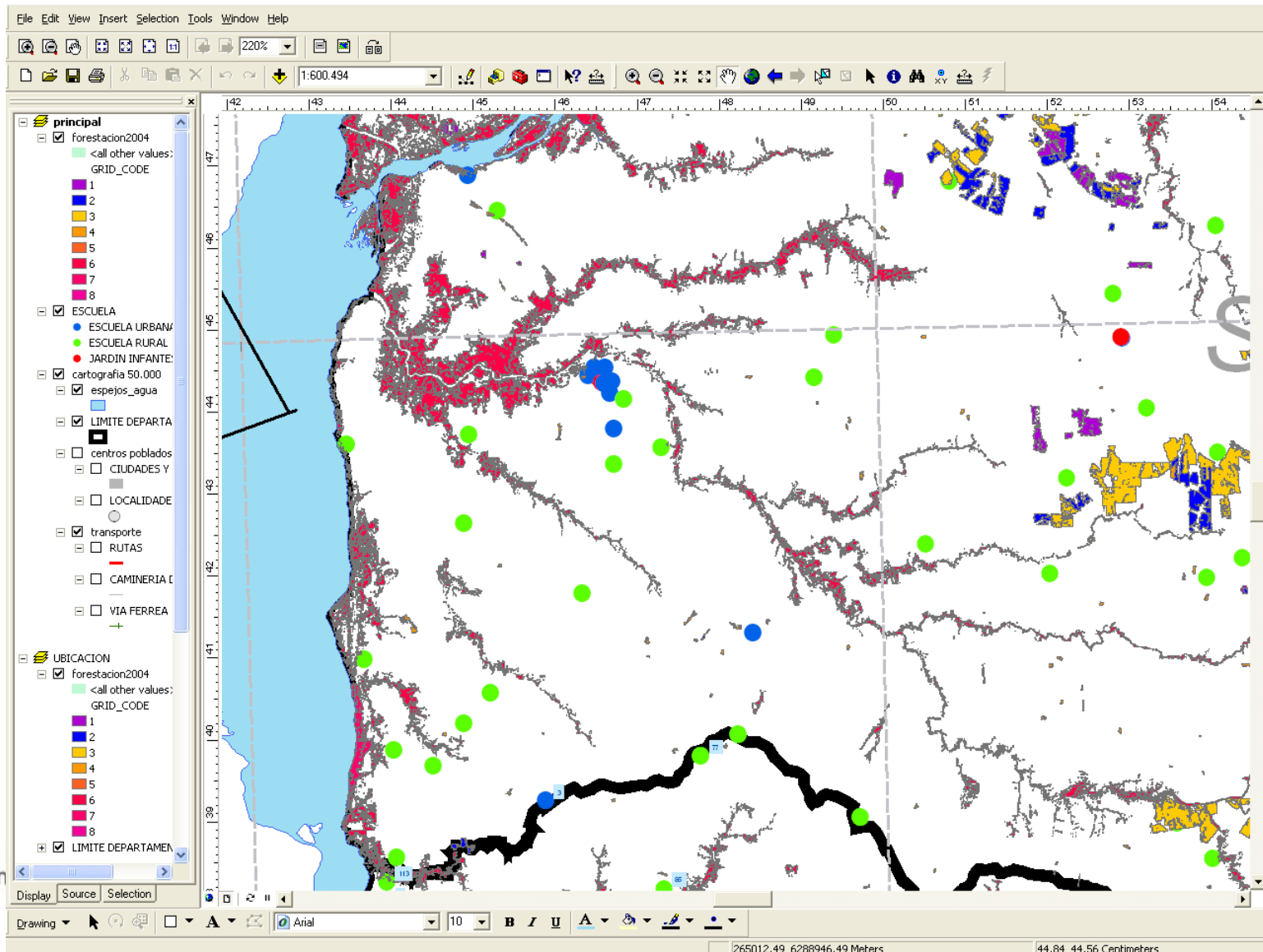


Stages



- Design and planning
 - Study of zones
 - Connection to internet (ADSL, EDGE, 3G, Satelite, P2P links)
- Network Implementation
 - LATU
 - Tender (more than 1 supplier to be faster)
 - Different technologies (MIMO, Wimax, P2P, EDGE / HSDPA, satelite)
 - Optimization
- Servers and laptops
- Management and monitoring network tools (software)

Pre design at zone level

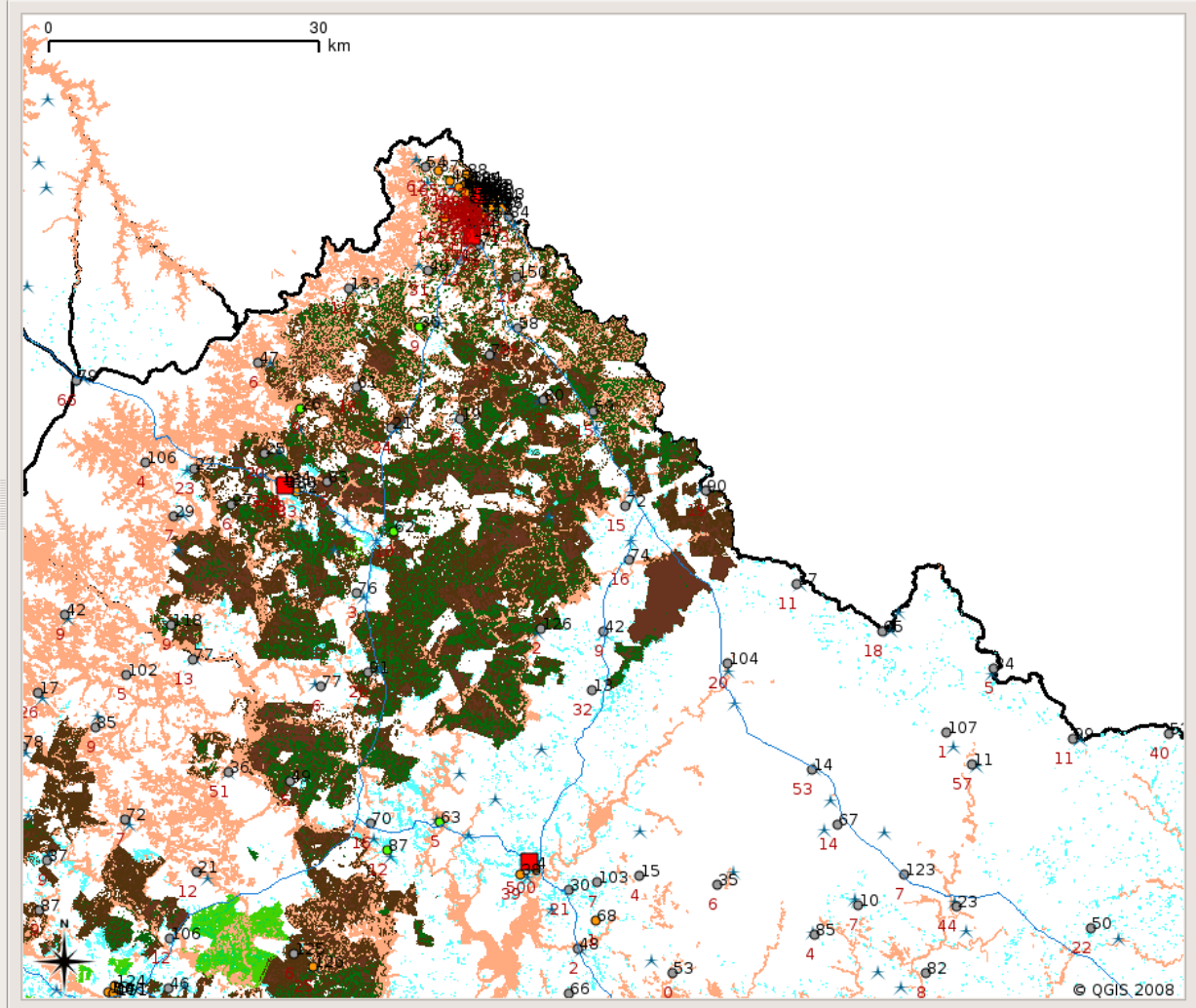


File View Layer Settings Plugins Help



Legend

- ☒ Ubic_CentralesyRemotos
- ☒ rutas
- ☒ escuela_publica
 - ACCESO
 - ADSL
 - EDGE
 - N/C
 - SATELITAL
 - datos antel
 - edge
 - licitado
 - p2mp
 - p2p
 - pendiente
 - satelital
 - sin electricidad
 - wimax
- ☒ localidades
- ☒ forestacionDU
 - GRID_CODE
 - 0.999 - 1.750 pino
 - 1.750 - 2.500 grandis 25m
 - 2.500 - 3.250 globulus 25m
 - 3.250 - 4.000 salvajes 50m
 - 4.000 - 4.750 salicaceas
 - 4.750 - 5.500 bosque nativo
 - 5.500 - 6.250 parque
 - 6.250 - 7.001 bosque costero
- ☒ limite_departamental



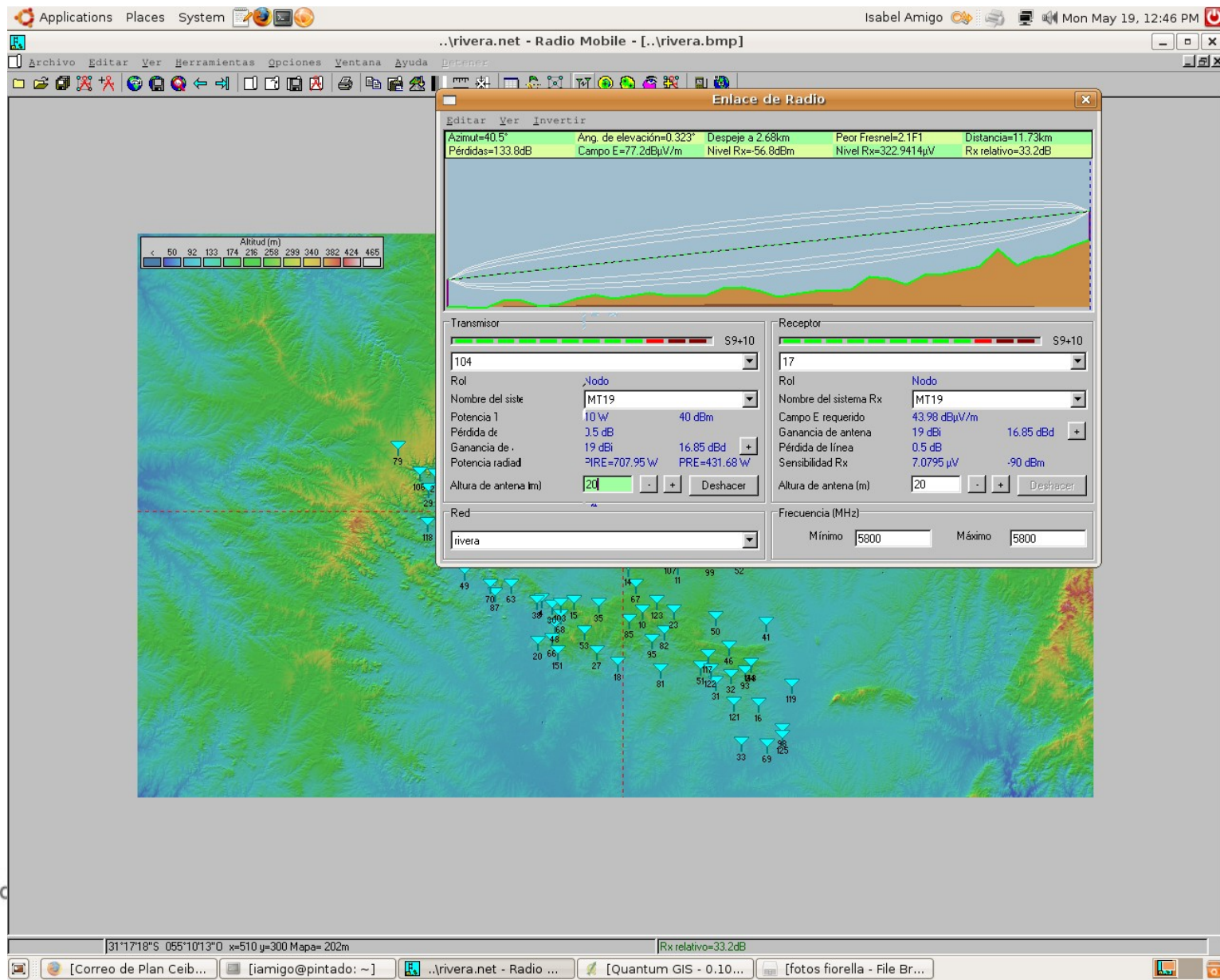
Map View

Toggles the editing state of the current layer

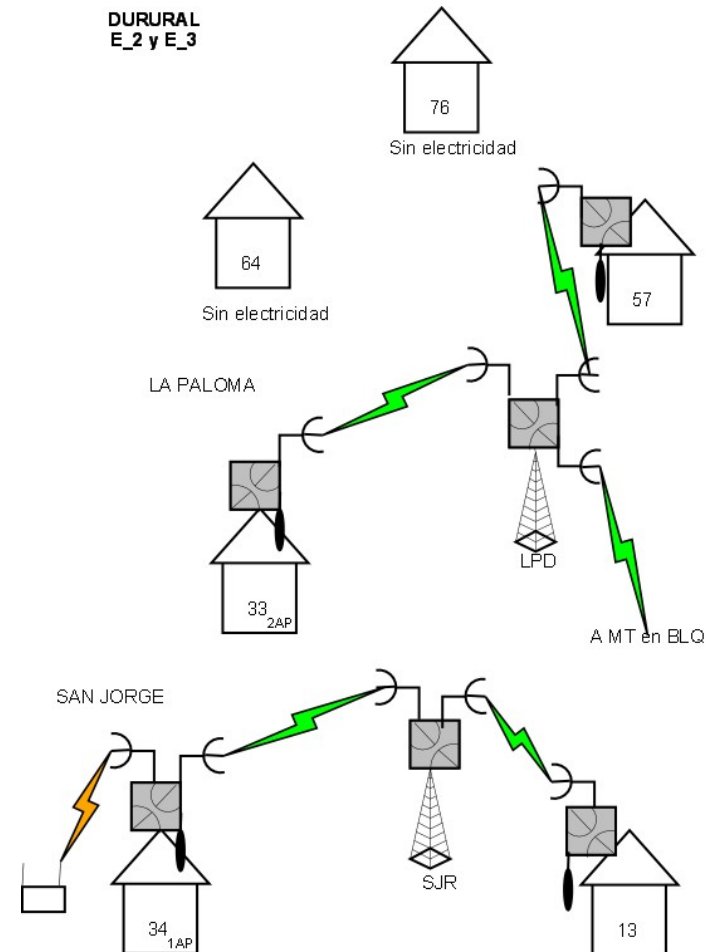
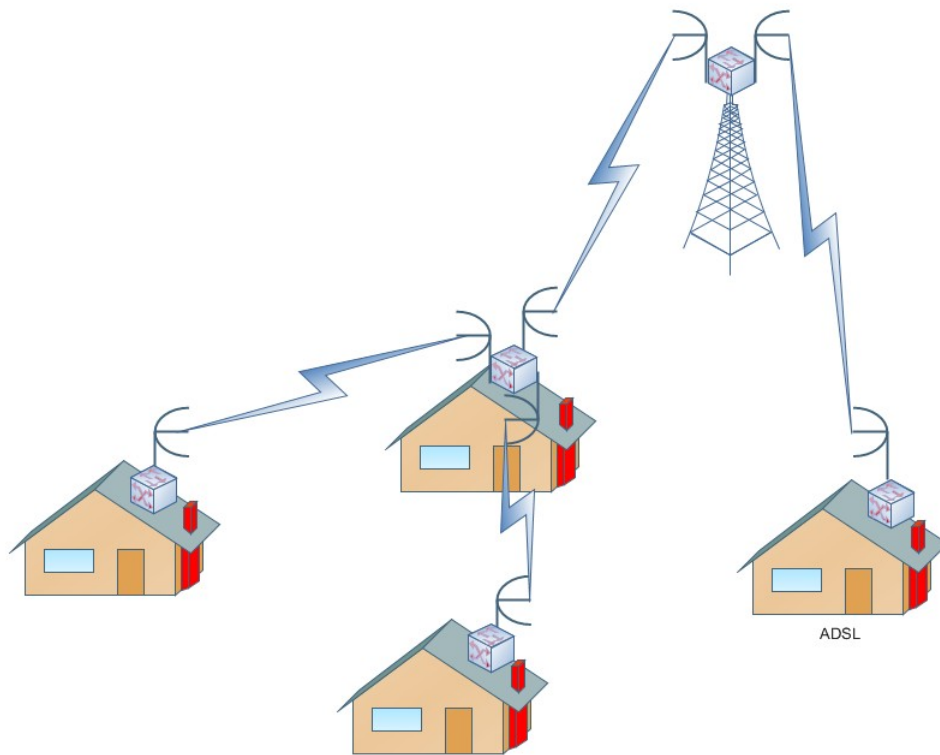
Scale 1:563474

506752,6534422 ☒ Render

P2P link calculations



Project details





Connectivity

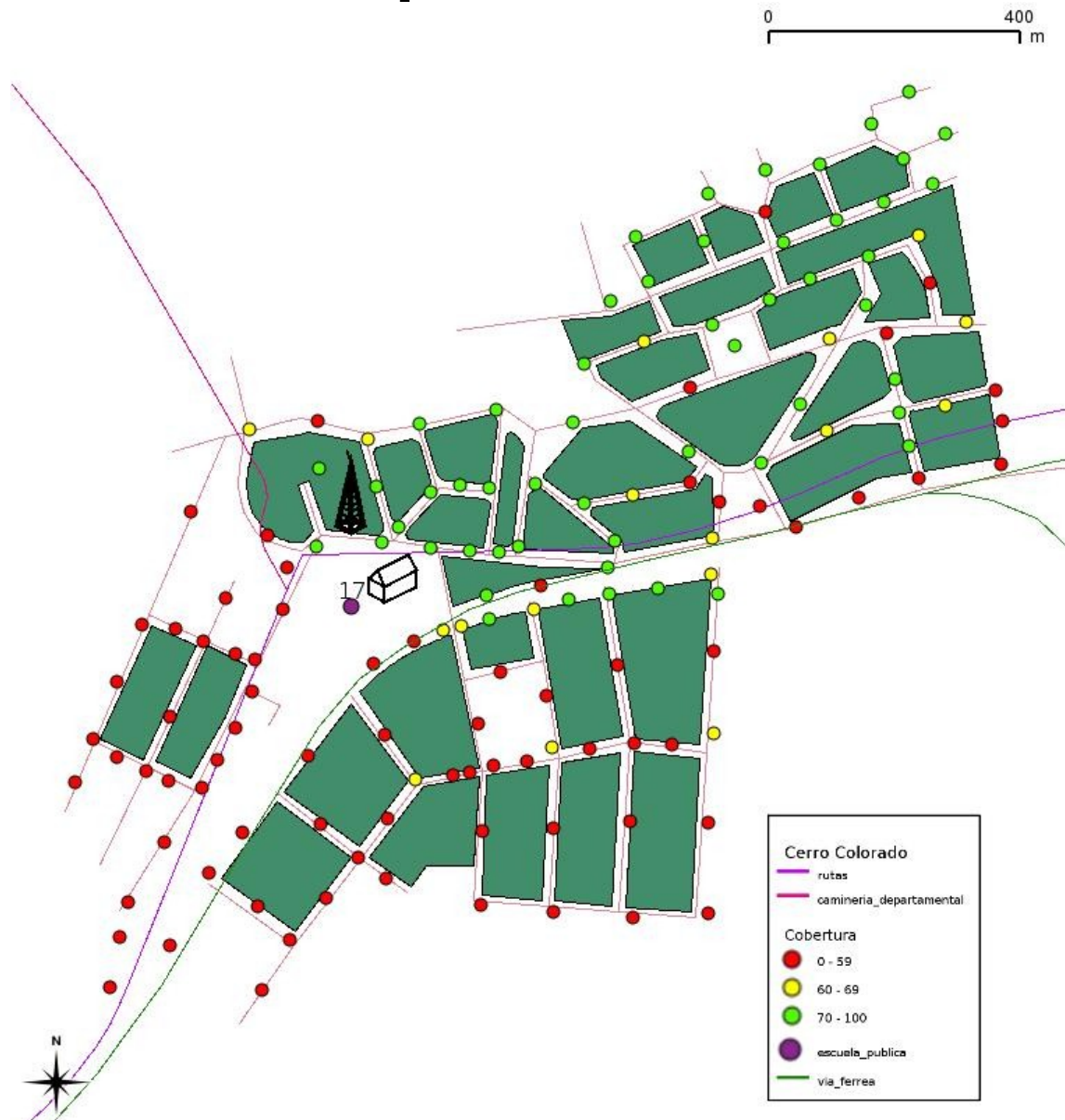
- Write tenders
- Evaluate and assign zones
- Implement zones
- Control and manage suppliers
- Optimize coverage

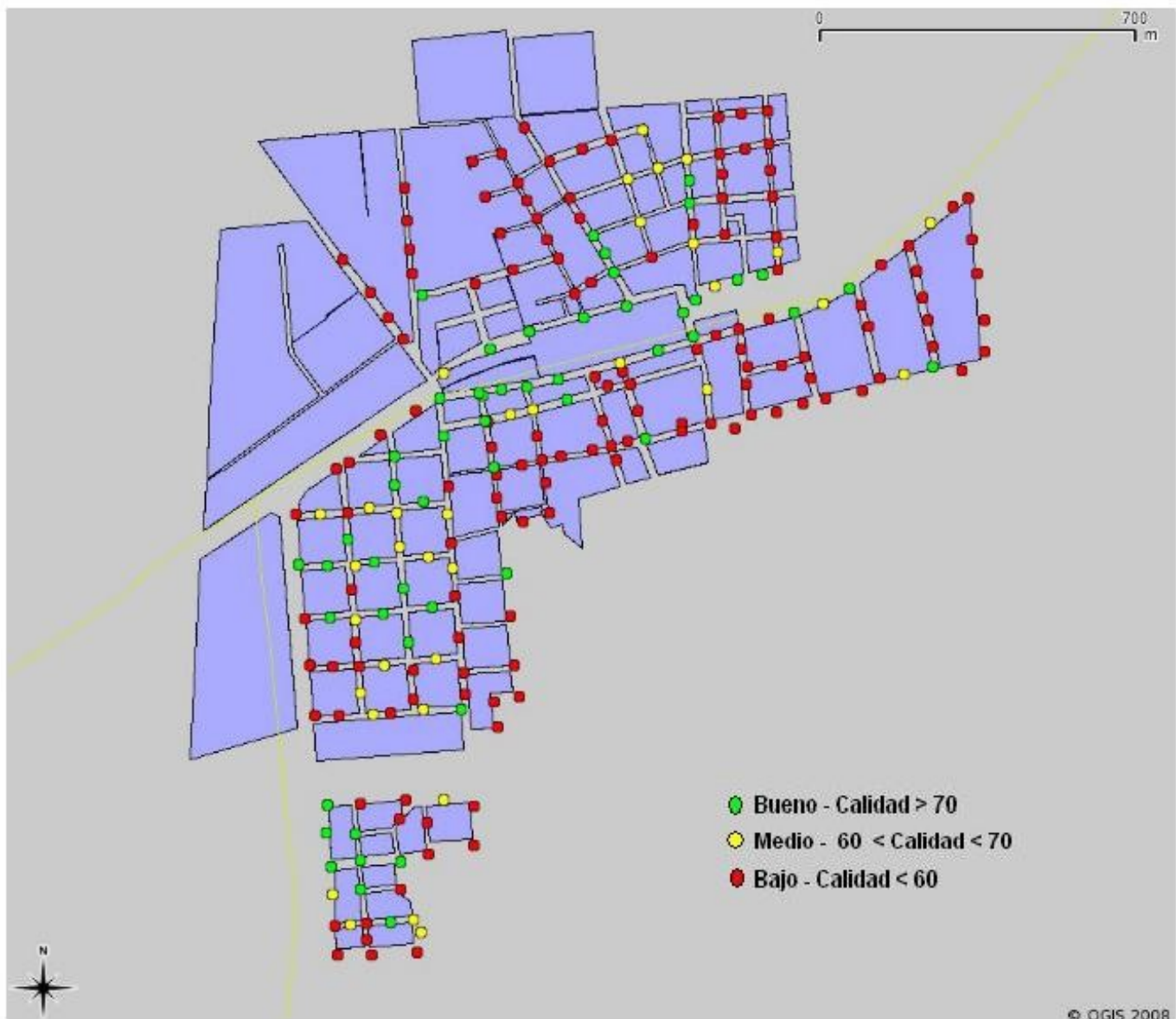
Towers

- From ANTEL, OSE, AFE, MoD, Radios, Cable, UTE, MEVIR.

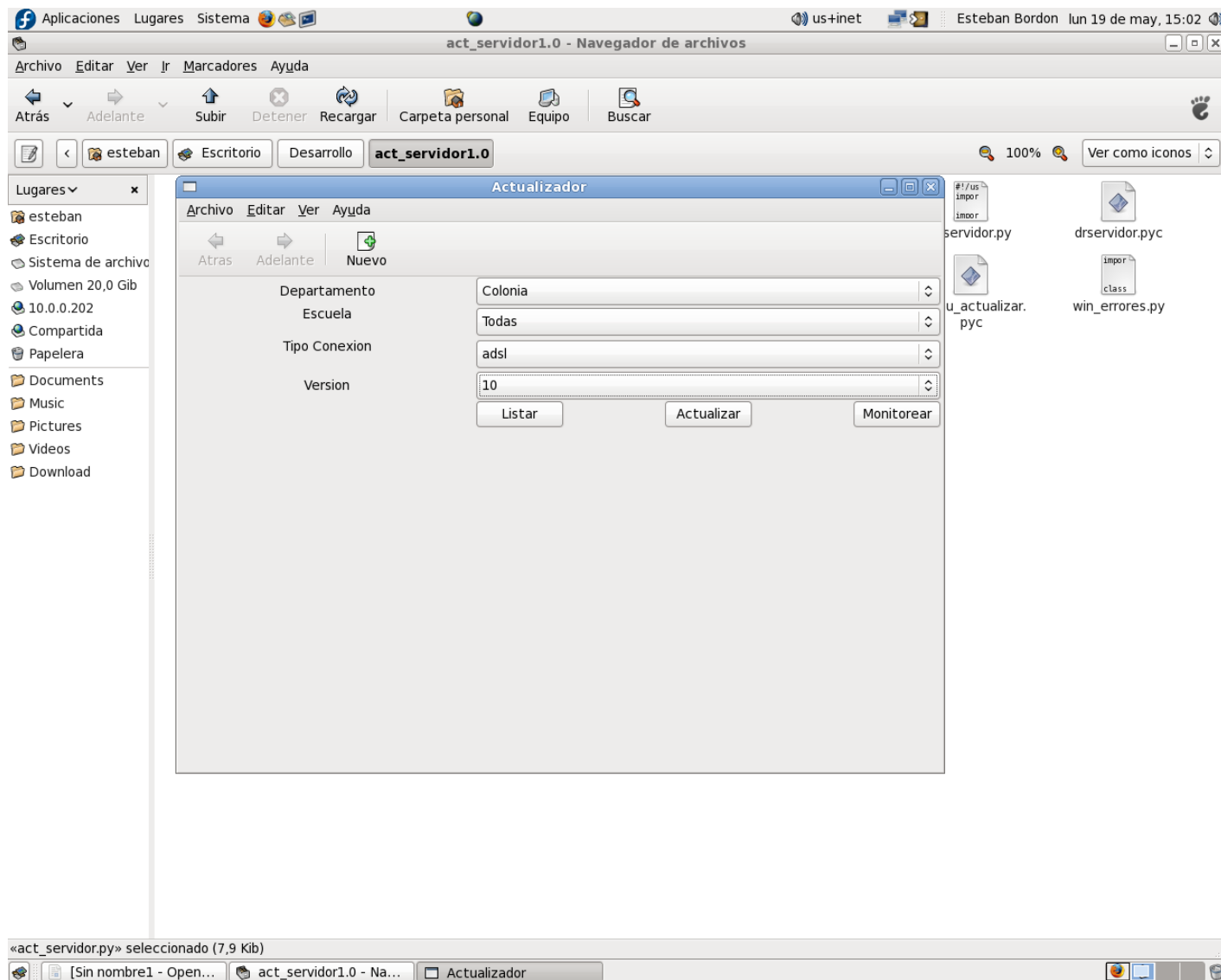


Control and optimization





Server update tool



Lugares

- esteban
- Escritorio
- Sistema de archivo
- Volumen 20,0 Gib
- 10.0.0.202
- Compartida
- Papelera
- Documents
- Music
- Pictures
- Videos
- Download

Actualizador		
Archivo Editar Ver Ayuda		
Atrás Adelante Nuevo		
Departamento	Escuela	Ultima actualizacion
Colonia (38)	31	
C. del Sacramento	2	2008-05-19
Carmelo	6	2008-05-19
Colonia	1	2008-05-19
Colonia	5	2008-05-19
Colonia	7	2008-05-19
Colonia	8	2008-05-19
Colonia	11	2008-05-19
Colonia	38	2008-05-19
Colonia	46	2008-05-19
Colonia	49	2008-05-19
Colonia	82	
Colonia	90	2008-05-19
Colonia	92	
Colonia	93	2008-05-19
Colonia	100	2008-05-19
Colonia	104	2008-05-19
Colonia	113	
Colonia	114	2008-05-19
Colonia	117	
Colonia	119	2008-05-19

- servidor.py
- drservidor.pyc
- u_actualizar.pyc
- win_errores.py

Monitoring servers

Aplicaciones Lugares Sistema us+inet Esteban Bordon lun 19 de may, 15:07

Actualizador

Archivo Editar Ver Ayuda

Atras Adelante Nuevo

Departamento Colonia

Escuela Todas

Tipo Conexion adsl

Version

100% Ver como iconos

itos_escuela.pvc drservidor.py drservidor.pvc

Dr. Servidor

Salir Actualizar mppdata Plazo Version XO Temperatura

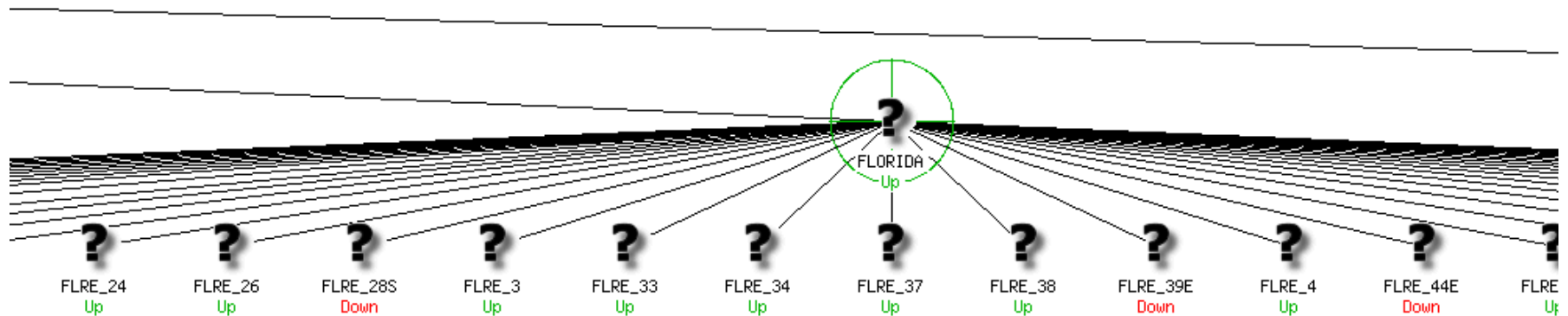
Buscando version de XO en 200.40.173.134...

Escuela	Departamento	Ciudad	Servidor	ADSL	/etc/mppdata.py	Plazo	Version XO	Temperatura (C)
2	Colonia	C. del Sacramento	200.40.88.254	200.40.88.253		20080620	20080510	39
6	Colonia	Carmelo	200.40.88.230	200.40.88.229		20080620	20080510	40
1	Colonia	Colonia	200.40.213.26	200.40.213.25		20080619	20080510	44
5	Colonia	Colonia	200.40.88.218	200.40.88.217		20080619	20080510	40
7	Colonia	Colonia	200.40.89.10	200.40.89.9		20080619	20080510	45
8	Colonia	Colonia	200.40.89.14	200.40.89.13		20080619	20080510	39
11	Colonia	Colonia	200.40.89.94	200.40.89.93		20080619	20080510	41
38	Colonia	Colonia	200.40.207.154	200.40.207.153		20080620	20080510	38
46	Colonia	Colonia	200.40.89.242	200.40.89.241		20080619	20080510	?
49	Colonia	Colonia	200.40.89.214	200.40.89.213		20080619	20080510	37
82	Colonia	Colonia	200.40.193.2	200.40.193.1		20080619	20071214	?
90	Colonia	Colonia	200.40.89.170	200.40.89.169		20080619	20080510	39
92	Colonia	Colonia	200.40.190.166	200.40.190.165		?	?	?
93	Colonia	Colonia	200.40.89.86	200.40.89.85		20080619	20080510	39
100	Colonia	Colonia	200.40.208.142	200.40.208.141		20080620	20080510	40
104	Colonia	Colonia	200.40.208.190	200.40.208.189		20080619	20080510	43
113	Colonia	Colonia	200.40.208.166	200.40.208.165		?	?	?
114	Colonia	Colonia	200.40.212.234	200.40.212.233		20080619	20080510	38
117	Colonia	Colonia	200.40.212.238	200.40.212.237		?	?	?


17 elementos, espacio libre: 16,7 Gib

[Sin nombre1 - Open... act_servidor1.0 - Na... Actualizador Dr. Servidor

Network monitoring




Report details



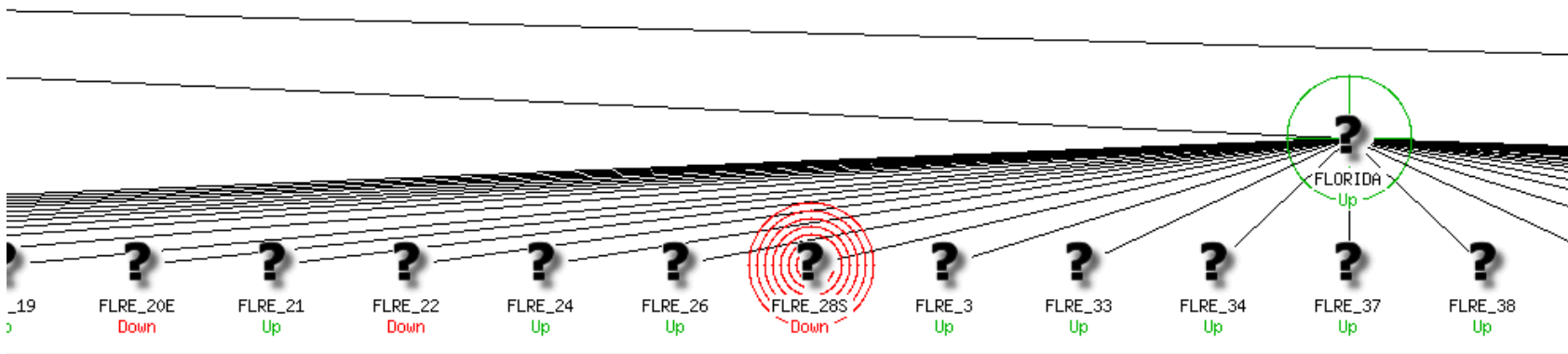
Debian GNU/Linux

Name: FLRE_28S
Alias: Florida - Escuela 28
Address: 200.115.2.98
State: **Down**
Status Information: CRITICAL - Plugin timed out after 10 seconds
State Duration: 0d 13h 43m 47s
Last Status Check: 2008-05-19 12:55:30
Last State Change: 2008-05-18 23:13:02
Parent Host(s): FLORIDA
Immediate Child Hosts: 0

Services:
- 8 critical

 Zoom In

Layout Method: **Balanced tree**
Scaling factor: 0.0
Drawing Layers:
Colonia - Escuela 1
Colonia - Escuela 10
Colonia - Escuela 100
Colonia - Escuela 104
Layer mode:
☐ Include
☒ Exclude
Suppress popups: ☐
Update



Nagios®

General

- Home
- Documentation

Monitoring

- Tactical Overview
- Service Detail
- Host Detail
- Hostgroup Overview
- Hostgroup Summary
- Hostgroup Grid
- Servicegroup Overview
- Servicegroup Summary
- Servicegroup Grid
- Status Map
- 3-D Status Map

- Service Problems
- Host Problems
- Network Outages

Show Host:

- Comments
- Downtime
- Process Info
- Performance Info
- Scheduling Queue

Reporting


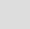
- Trends

Host	Services	Actions
FLORIDA	Servicio SSH en FLORIDA	  


[Florida - Escuela 1 \(FLRE_1\)](#)

Host	Services	Actions
FLRE_1	Canopy 172.16.1.74 Canopy 172.16.1.75 Check_disk / Check_disk /home Check_disk /respaldo Check_disk /var MikroTik 172.16.1.72 MikroTik 172.16.1.81 MikroTik 172.16.1.82 Raid md0 Raid md1 Servicio SSH en FLRE_1 Wavlon Antel 172.16.1.73	  



[Florida - Escuela 101 \(FLRE_101S\)](#)

Host	Services	Actions
FLRE_101S	Check_disk / Check_disk /home Check_disk /respaldo Check_disk /var Mikrotik 172.16.12.179 Raid md0 Raid md1 Servicio SSH en Fire_101S	  



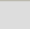
[Florida - Escuela 102 \(FLRE_102\)](#)

Host	Services	Actions
FLRE_102	Check_disk / Check_disk /home Check_disk /respaldo Check_disk /var Mikrotik 172.16.1.64 Raid md0 Raid md1 Servicio SSH en Fire_102	  

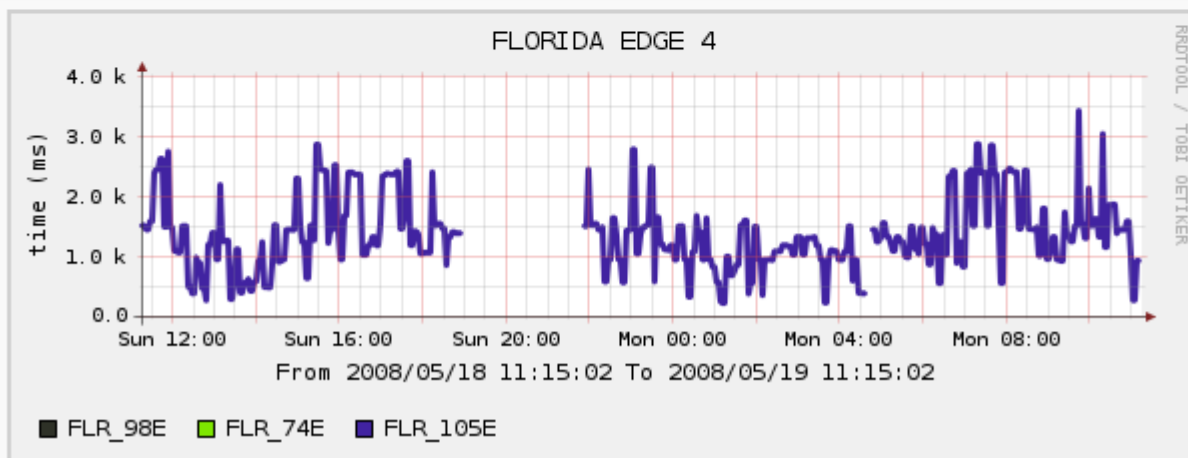
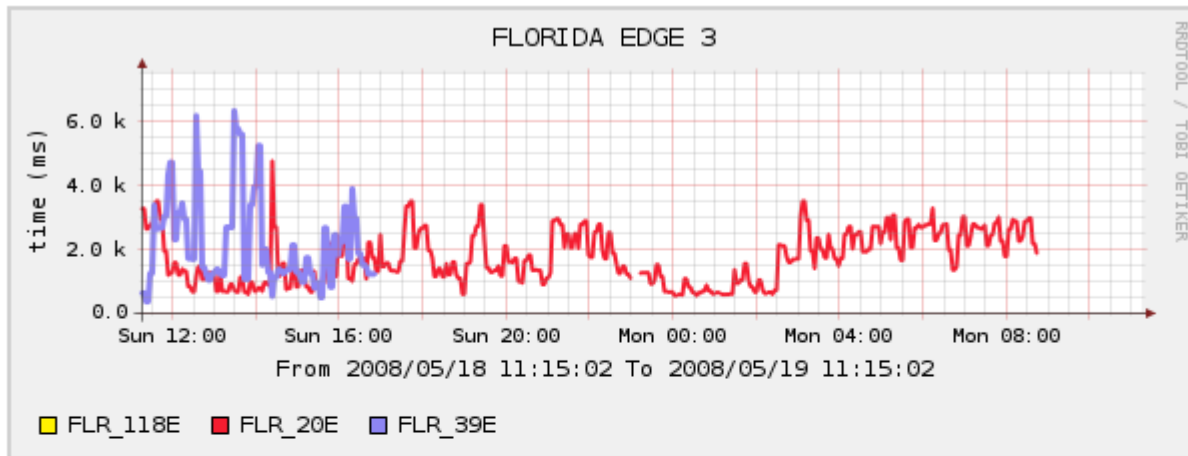
[Florida - Escuela 103 \(FLRE_103\)](#)

Host	Services	Actions
FLRE_103	Check_disk / Check_disk /home Check_disk /respaldo Check_disk /var Mikrotik 172.16.1.55 Mikrotik 172.16.1.56 Raid md0 Raid md1 Servicio SSH en Fire_103	  

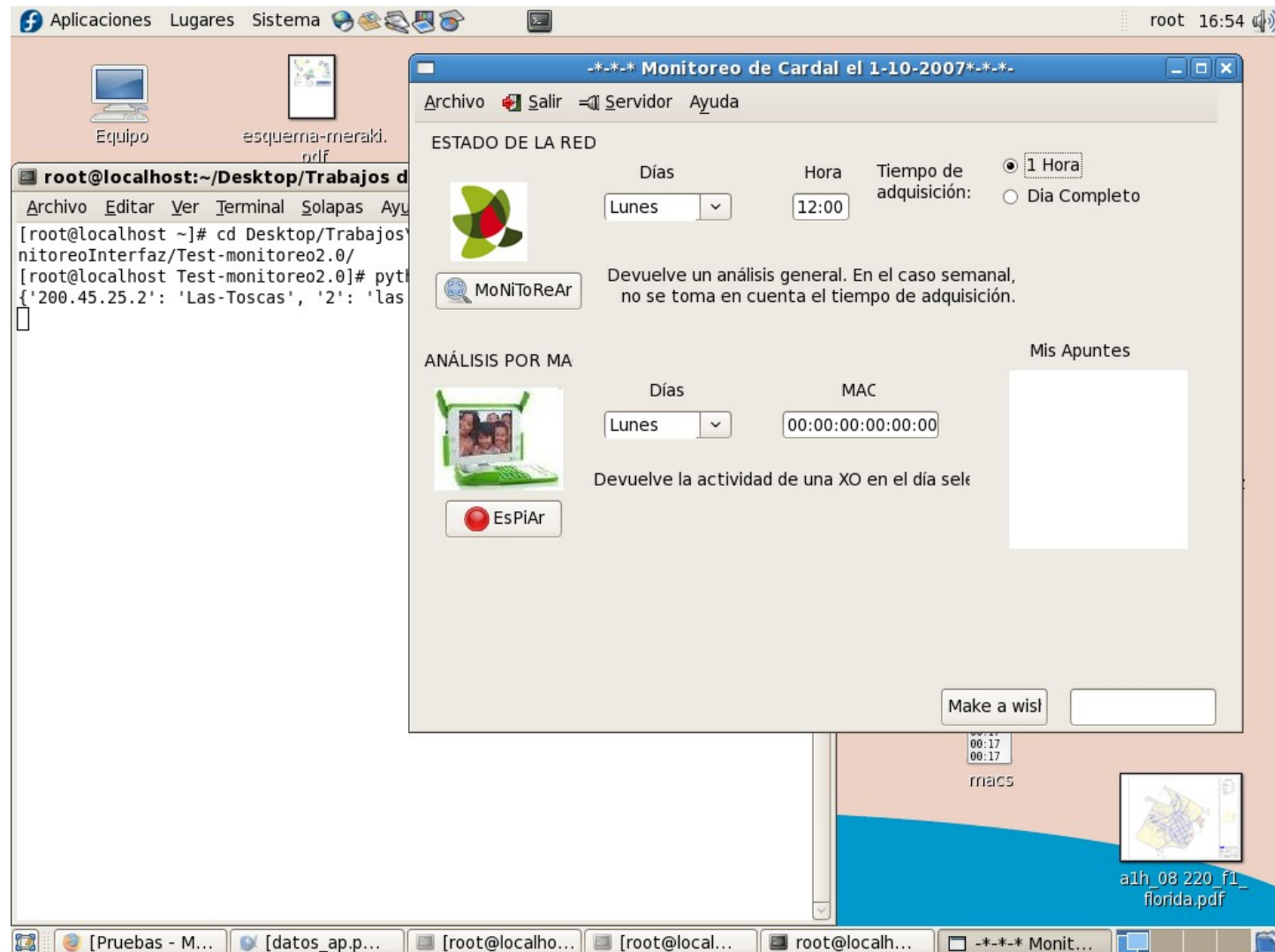
[Florida - Escuela 105 \(FLRE_105E\)](#)

Host	Services	Actions
FLRE_105E	Check_disk / Check_disk /home Check_disk /respaldo Check_disk /var Mikrotik 172.16.16.51 Raid md0 Raid md1 Servicio SSH en FLRE_105 EDGE	  

Special cases



Laptops monitoring software





Questions?